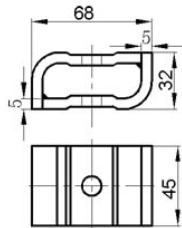
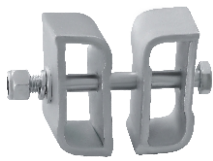
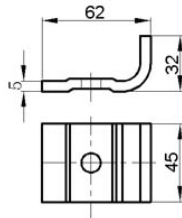


Elevator Belt Fasteners

A proper belt clamp will result in more reliable equipment operation, less downtime, and longer life time of the elevator belt. Our belt fasteners are able to offer a high degree clamping force during equipment operation in various working environment.

LIGHT DUTY FASTENERS



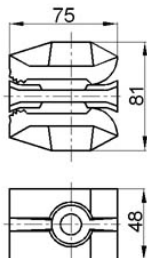
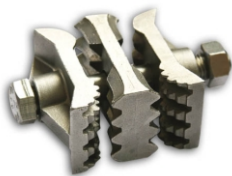
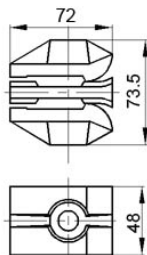
S1

- Material: Carbon Steel (Galvanized)
- Created by stamping with accurate dimension.
- Ease of assembly and suitable for various belt width.
- Belt Strength: 315N/mm max.
- M10 Bolts

S2

- Material: Carbon Steel (Galvanized)
- Created by welding two S1 belt clamp fasteners with accurate dimension.
- Ease of assembly and suitable for various belt width.
- Belt Strength: 800N/mm max.
- M10 Bolts

HEAVY DUTY FASTENERS



S4

- Material: Carbon Steel (Galvanized)
- Precision cast process, accurate clamp dimension and consistent high clamp forces during operation.
- A mechanical clamping device with a simple three-piece metal construction with serrated jaws to generate the superior clamping force.
- Belt Strength: 1200N/mm max.
- M12 Bolts

S5

- Material: Carbon Steel (Galvanized)
- Precision cast process, accurate clamp dimension and consistent high clamp forces during operation.
- A mechanical clamping device with a simple three-piece metal construction with deep serrated jaws to generate the maximum clamping force possible.
- Belt Strength: 1600N/mm max.
- M16 Bolts

